

	THT/En-MO0
	F

扬州中 华专用 有 公司

# 能源管理手册

编制：蔡红章

审核：李益群

批准：丁正祥

2024 7 1

## 文件变更 录

		/				
1	21001	4.3	2021. 4. 10			
2	21003	GB/T23331- 2020/I SO50001: 2018 /	2021. 7. 10			
3	22001	/	2022. 7. 20			
4	23001	/	2023. 2. 20			
5	23002	/	2023. 8. 5			
6	23003	/	2023. 11. 23			
7	24001	/	2024. 7. 1			
8						
9						
10						
11						
12						





GB/T 23331-2020/I SO50001: 2018 RB/T119-2015  
2020 09 01

2020 08 28

2024  
F

THT/En-M00

2024 7 1



GB/T 23331-2020/ISO 50001: 2018

- 
- 
- 
- 
- 
- 
-

---

			/
		LTP1	
		HSE	
		HSE	

---



1992 8 2003 3

SS2006

ð

IMD 1

" "

59.2

17.4

5.67

36000

,

J

«

m i

€

					( )
1					
2			tce/		
3			tce/		
4			tce/		
5			kWh/		
6			m <sup>3</sup> /		
7			KG/		
8			/		
9		A	tce/		
10		A	tce/		
11		B	tce/		
12		B	tce/		
13		B	tce/		
14			tce/		
15			tce/		
16			tce/		
17			tce/		
18			KWh/		
19		KTL			
20		KTL			
21		KTL			
22		KTL			
23		B6			
24		B6			
25			Mpa		
26		KTL			
27		KTL			
28			Mpa		

GB/T 23331-2020/ISO 50001: 2018

RB/T119-2015

\_\_\_\_\_

\_\_\_\_\_

\_\_\_\_\_

2024. 7. 1

- 
- 
-

- 

- 

- 

- 

- 

- 

GB/T 23331-2020/ISO50001: 2018

RB/T119-2015

- 

GB/T 23331-2020/ISO50001: 2018

RB/T119-2015

GB/T 23331-2020/ISO50001: 2018

RB/T119-2015

3.1

3.2

3.3

3.4

3.5

/

3.6

3.7

3.8

3.9

3.10

3.11

3.12

/

3.13

3.14

3.15

/

3.16

3.17

3.18





- 
- 
- 
- 
-





GB/T 23331-2020/ISO 50001: 2018

RB/T119-2015

B2

6.1.1

4.1

4.2

6.1.2

4.1 4.2

SMART

- a)
- b)
- c)
- d)
- e)

- a)
- 1)
- 2)
- b)
- c)
- 1)
- 2)
- 3)
- d)
- e)

a)

1)

2)

b)

1)

2)

3)

4)

c)

1)

2)

3)

4)

5)

- a)
- b)
- c)

- a)
- b)
- c)
- d)
- e)





7.5.1

7.5.2

7.5.3

î

a)

b)

c)

d)

a)

b)

9.1.1

a)

- 1)
- 2)
- 3)
- 4)
- b)
- c)
- d)

9.1.2

9.2.1

- a)
- b)
- 
-

--

a)

9. 2. 2

a)

b)

c)

d)

e)

f)

9. 3. 1

9. 3. 2

a)

b)

c)

1)

2)

3)

4)

d)

e)

9. 3. 3

--

--

--

9. 3. 4

a)

b)

c) 7- $\text{\$iFJ}$ , i F Ä

d)

e)

f)

g)

a)

1)

2)

b)

1)

2)

3)

c)

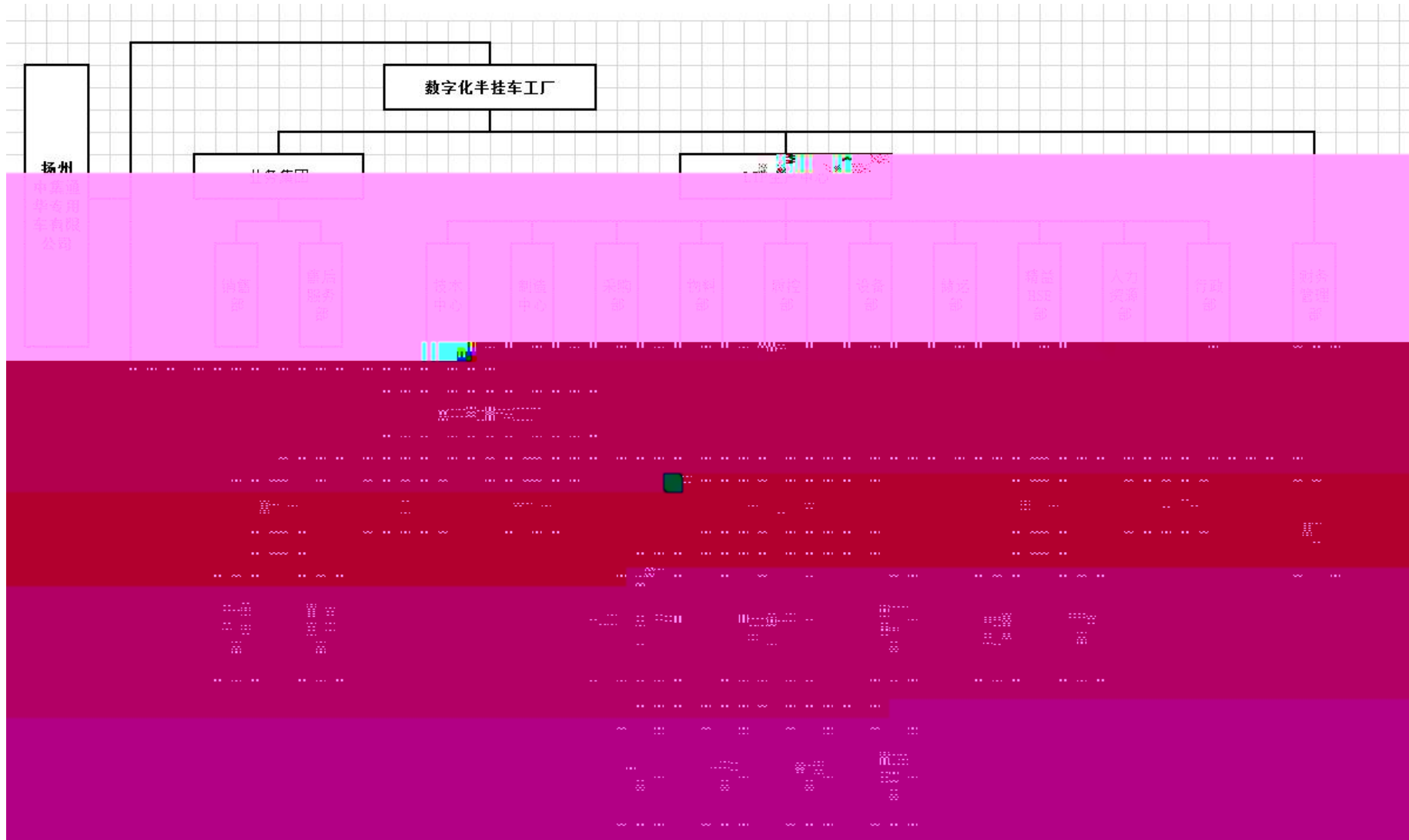
d)

e)

i

Q

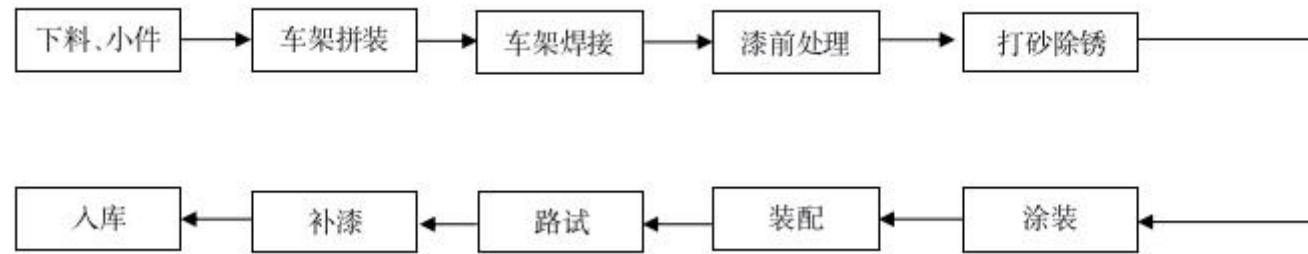
i m'



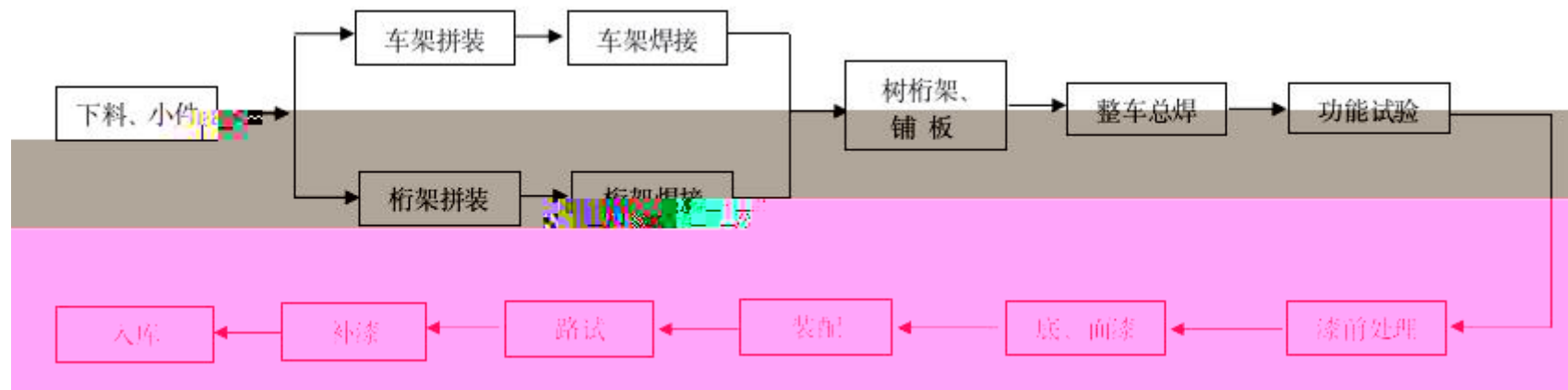
1



2

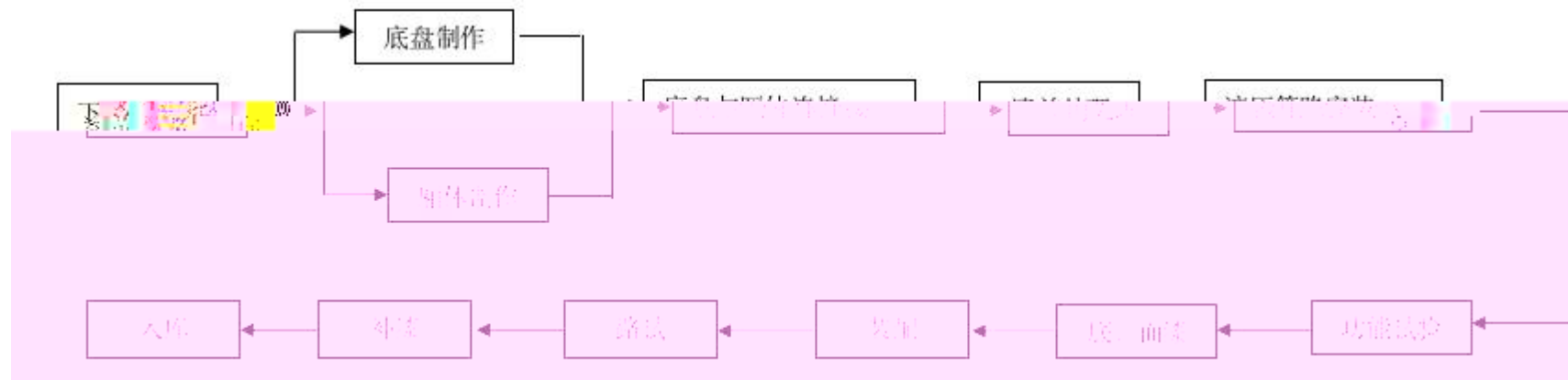


3

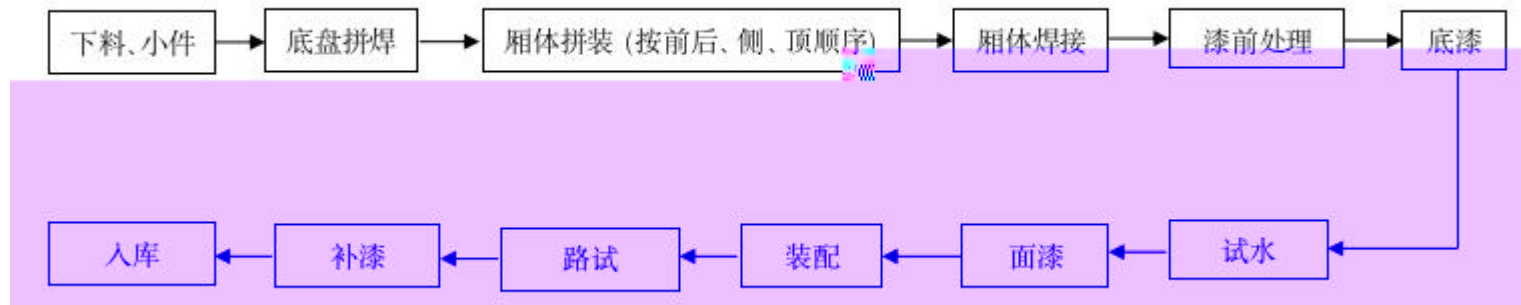




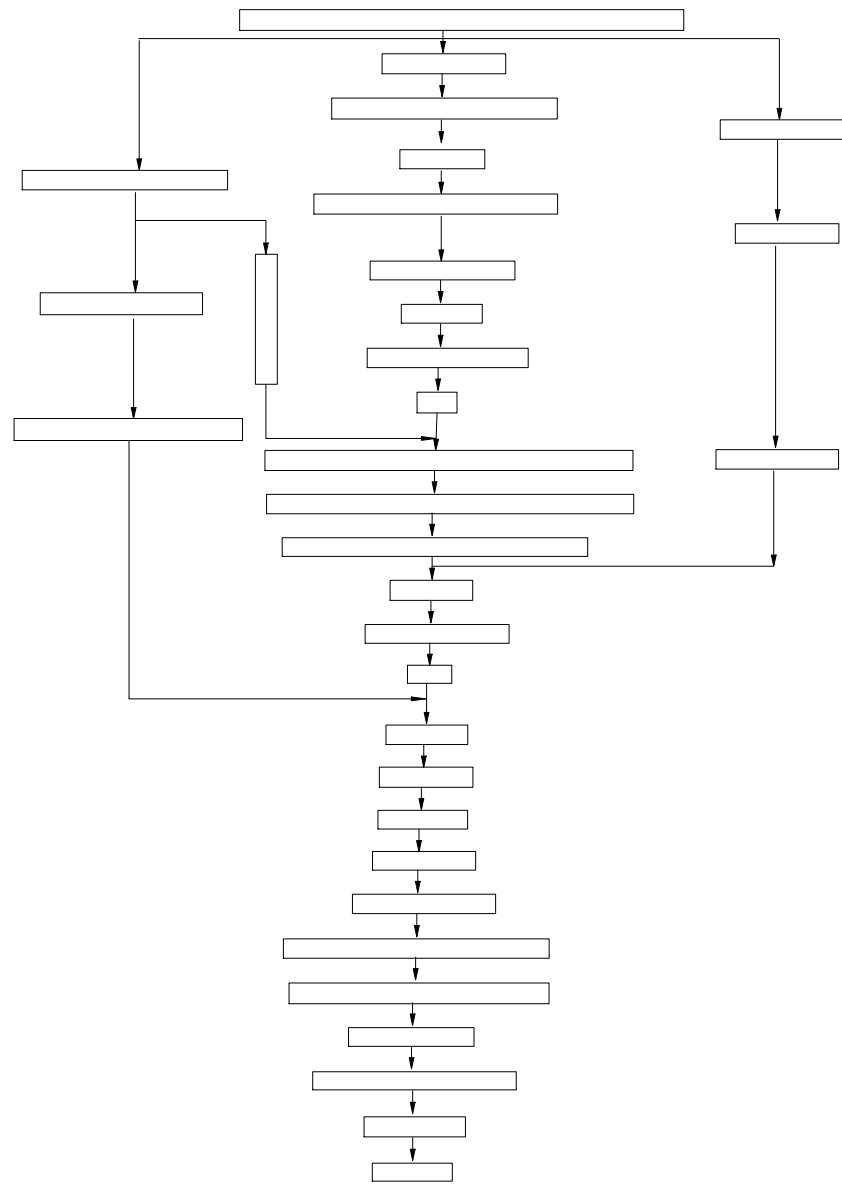
4



5



6



7

### 搅拌罐工序流程

划线及校工

漆前处理

底、面漆

上装与底盘连接

底盘附件安装

上装附件安装

水管路安装

电路安装

调试

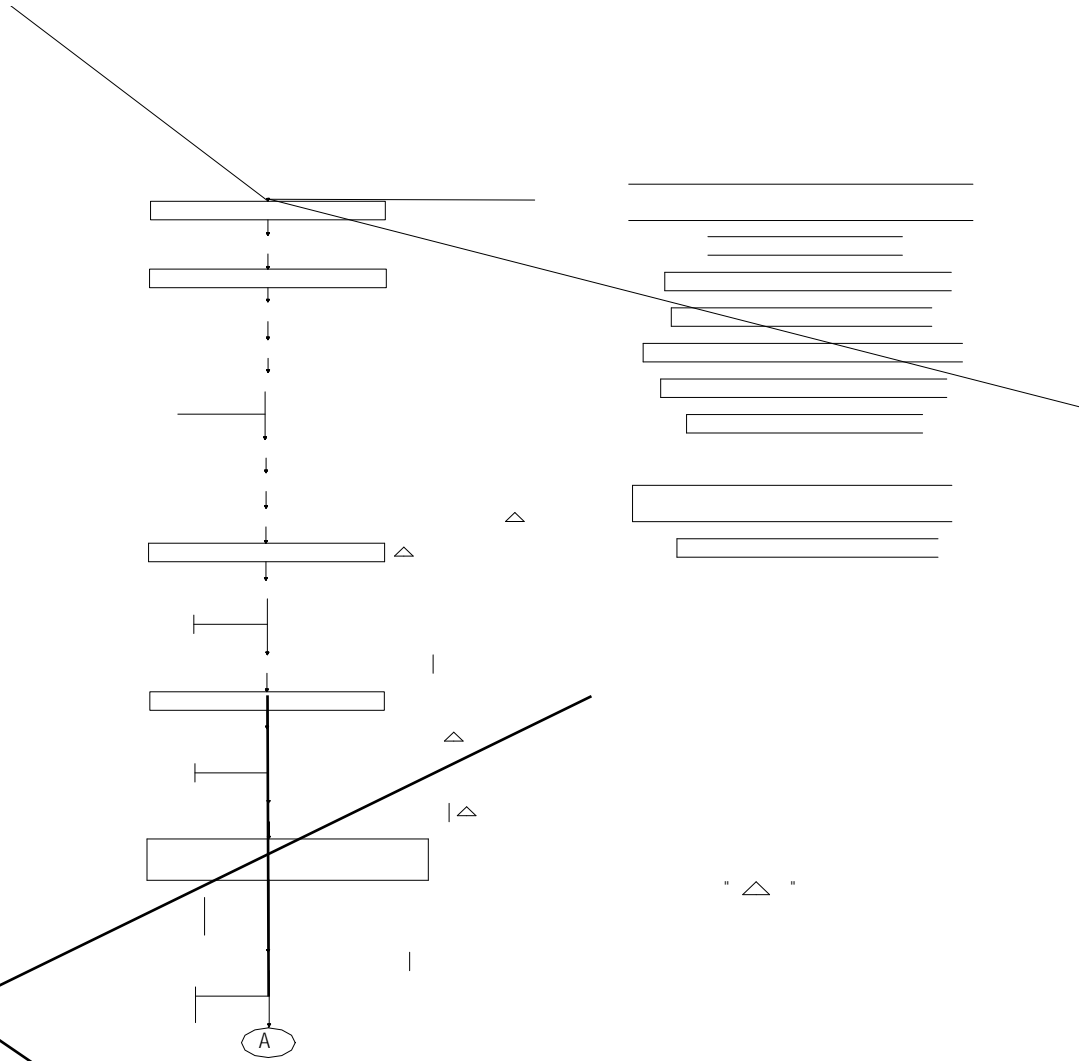
局部补漆、广告

标识

终检

入库

8



GB/T 23331-2020/ISO50001 : 2018			/										
									/		/	HSE	
4													
4.1													
4.2													
4.3													
4.4													
5													
5.1													
5.2													
5.3													
6													

6.1

6.2

6.3

6.4

6.5

6.6

7

7.1

7.2

7.3







" m' m'

m'

B. 3

		THT/En- P01	B
		THT/En- P02	B
		THT/En- P03	B
		THT/En- P04	B
		THT/En- P05	B
		THT/En- P06	B
		THT/En- P07	B
		THT/En- P08	B
		THT/En- P09	B
		THT/En- P10	B
		THT/En- P11	B
		THT/En- P12	B
		THT/En- P13	B
		THT/En- P14	B
		THT/En- P15	B